

# Bridges to digital education

Empowering knowledge entrepreneurs for the future

*A human-centered framework  
to support digital transformation in emerging economies*



Vanesa Maiorana  
Argentina



**MoodleMoot 2025**  
Learning to shape tomorrow



# Why so many educators stay offline

- ❖ In emerging economies, many professionals remain disconnected from digital education.
- ❖ Their knowledge is valuable, but hard to scale digitally.
- ❖ Long working hours leave no time or energy for new systems.
- ❖ Budgets demand slow, step-by-step growth.

*It's not a lack of motivation, it's a lack of time, resources, guidance, and a realistic path forward.*



# Unlocking the digital future. Insights from Argentina

- ❖ The challenges in Argentina reflect those in many countries.
- ❖ The journey is demanding, yet new opportunities are opening.
- ❖ Argentina has proven it's possible to export knowledge despite crises.
- ❖ Argentina is ready to contribute with resilience and quality.

*Let's support educators in shaping tomorrow*









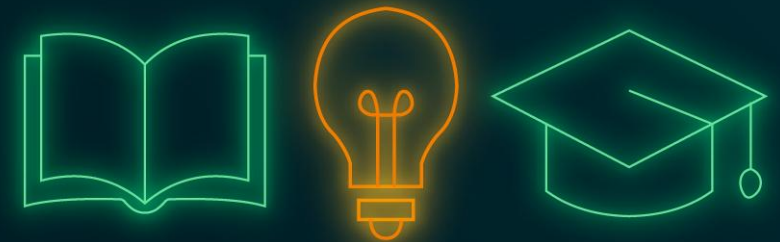
**ALMA**

A human-centered way  
to cross the digital bridge



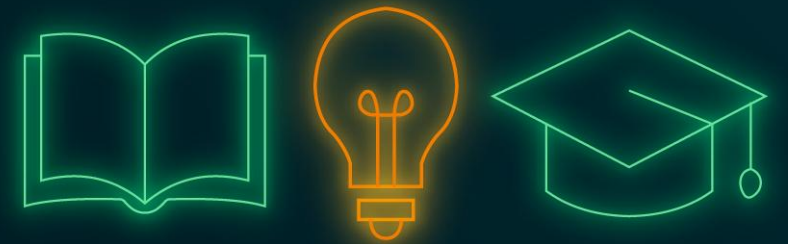
# ALMA. Guiding educators across the digital bridge

-  **A**wakening. Valuing knowledge and the wish to share it.  
Listening, defining vision, inspiring possibilities.
-  **L**anding. Creating the first digital space  
Setting up essentials, structuring the first course, prioritizing function.
-  **M**apping. Designing content and redefining the role.  
Transforming materials, using tools, supporting emotional shift.
-  **A**lignment. Improving and connecting the whole experience  
Evaluation, learning flows, continuous improvement.



Awakening  
Landing  
Mapping  
Alignment

*Each stage honors  
the educator's pace, resources,  
and reality.*



# Moodle: a human centered ally

- ❖ Adapts to each educator's context, pace, and reality.
- ❖ Grows step by step — from a single course to a full ecosystem.
- ❖ Supports flexible and learner-centered education.
- ❖ Makes digital change sustainable when it meets real people where they are.

*Start small. Stay simple. Scale with purpose.*





*“AI enriches the human-centered Moodle journey — making it not just faster, but more confident and sustainable. It supports educators, amplifies creativity, and helps bring their ideas to life.”*



# Enriching Moodle ecosystems through AI

- Simplifies content creation.
  - ❖ Generate lesson drafts, quizzes, glossaries, and summaries in seconds.
- 🔧 Supports course design.
  - ❖ Suggests competencies, learning paths, and rubrics.
- 🎨 Expands creative possibilities.
  - ❖ Generates multimedia prompts, interactive activities, and diverse resources.
- 🙋 Empowers educators.
  - ❖ Offers guidance, feedback drafts, and ideas — accessible without technical expertise.
- 📄 Enhances technical support.
  - ❖ Helps troubleshoot Moodle issues, configure tools, and find practical solutions.



***ALMA** brings together a human-centered vision and AI support, helping educators shape sustainable digital transformations.*

**Thank you**



Vanesa Maiorana  
Argentina

